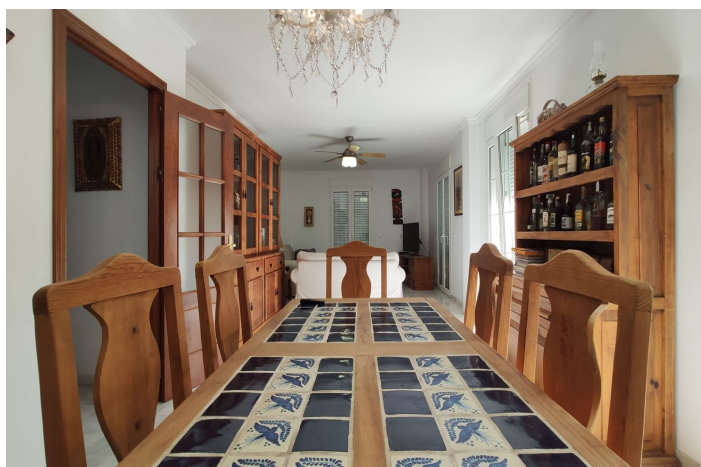




Adosada en venta en Pizarra, Pizarra

279.000 €

Referencia: R5021743 Dormitorios: 4 Baños: 3 Terreno: 117m² Construido: 285m²





Valle del Guadalhorce, Pizarra

A three-story house for sale in the heart of Pizarra, filled with natural light throughout and offering endless possibilities. On the ground floor, there is a spacious 95 m² commercial space currently set up as a medical clinic, with anti-vandal glass, a restroom, and an interior patio—ready for immediate professional use. The first floor houses a 180 m² duplex. The lower level features a large living-dining room, a fully equipped kitchen with high-end appliances, a master bedroom, and a full bathroom. The upper floor is an open-plan attic with two additional bedrooms and a spacious second bathroom. The top floor boasts a rooftop terrace and solarium with 360° panoramic views over the town and the surrounding countryside—perfect for relaxing outdoors and enjoying the sunset. The property offers top-quality finishes: white Macael marble flooring, porcelain tiling in the kitchen and bathrooms, built-in wardrobes, tilt-and-turn Kommerling PVC windows with Climalit double glazing, and motorized blinds. All rooms are fitted with low-consumption air conditioning, and hot water is supplied via solar energy (300 L tank), supported by an additional 1,500 L water tank. This is an exceptional investment opportunity: the commercial space could be used as a dental or veterinary clinic, a physiotherapy center, an academy, or a beauty studio. It could also be converted into a residence or multiple rental rooms. The duplex, with separate access to each floor, allows for the creation of two independent dwellings, maximizing profitability. Located in the Guadalhorce Valley (Málaga), Pizarra enjoys excellent transport links: the RENFE C-2 commuter train line and the A-357 highway both connect to Málaga city and the airport in under 30 minutes. The town offers all essential services: health center, pharmacies, supermarkets, schools, shops, and Andalusian restaurants. Its natural surroundings are ideal for hiking and exploring historical landmarks such as the Church of San Pedro and the Hermitage of La Fuensanta. With its proximity to Málaga and complete infrastructure, Pizarra is an ideal place to live or invest. Don't miss this unique opportunity—contact us today for more information or to arrange a visit.



Características:

Características

Cerca de Transporte
Baño En-Suite
Suelos de Mármol
Doble acristalamiento
Armarios Empotrados
Solario
Cerca de una Iglesia
Fibra óptica

Vistas

Vistas a Montaña
Vistas Panorámicas
Vistas al Campo
Vistas Urbanas

Cocina

Cocina Equipada

CO2 Emission Rating

D

Orientación

Orientación Suroeste

Posición

Cerca de Tiendas
Cerca de Ciudad
Cerca de Colegios

Seguridad

Persianas Eléctricas
Portero Automático

Climatización

Aire Acondicionado

Estado

Buen estado de conservación

Calificación energética

E