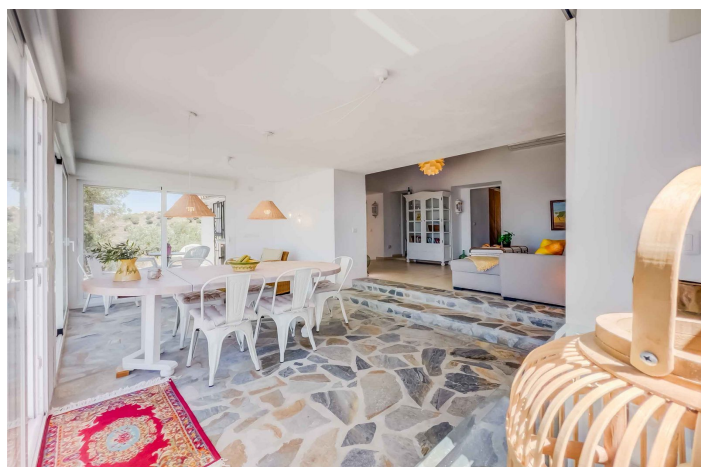
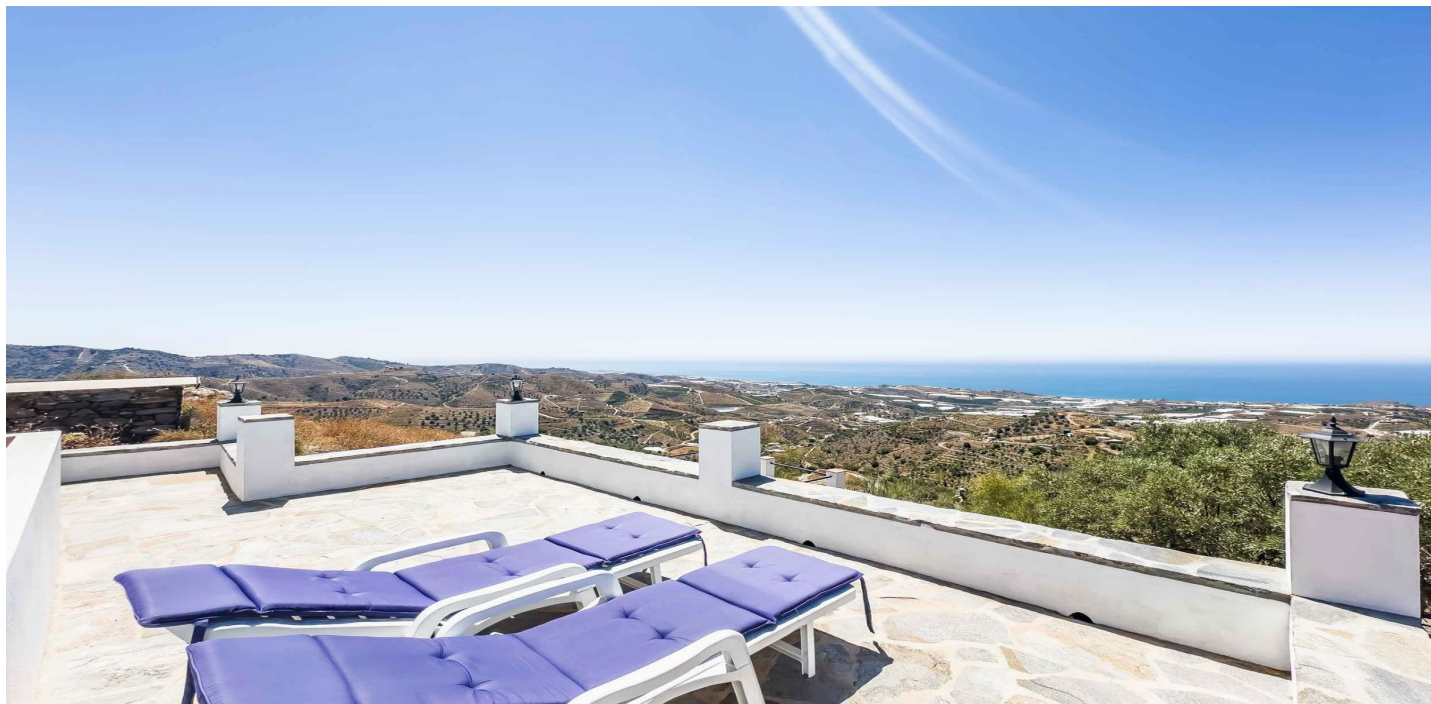




Finca - Rural Estate for sale in Sayalonga, Sayalonga

365,000 €

Reference: R4792561 Bedrooms: 2 Bathrooms: 2 Plot Size: 4,000m² Build Size: 115m²





Axarquía, Sayalonga

Situated in the beautiful mountain town of Sayalonga, this charming finca offers a unique blend of rustic allure and modern comfort. With a generous built area of 115 m² and a sprawling plot of 4000 m², this property provides ample space for relaxation and outdoor activities. The south-facing orientation ensures the home is bathed in natural sunlight throughout the day, creating a warm and inviting atmosphere with an incredible panoramic view of Costa del Sol. Inside, the property features two spacious bedrooms and two modern bathrooms, including a nice ensuite bathroom. The fully furnished interior is designed for comfort and style, with a fully fitted kitchen equipped with all the modern appliances you may need. The living spaces extend to a private terrace, perfect for enjoying the serene surroundings and breathtaking views. Additional features include a convenient storage room and a basement offering extra space for storage or potential development. The private garden is beautifully landscaped and easy to maintain, providing a peaceful oasis for outdoor enjoyment. Open parking is available for your convenience. The property was completely renovated in 2008 and partially renovated again in 2023! This property is an excellent investment opportunity and is also ideal for those looking for a resale property with both character and modern amenities. The combination of its prime location, beautiful setting, and well-appointed features makes this finca a rare find in Costa del Sol East. Finca - Cortijo, Sayalonga, Costa del Sol East. 2 Bedrooms, 2 Bathrooms, Built 115 m², Garden/Plot 4000 m². Setting : Mountain Pueblo. Orientation : South. Features : Private Terrace, Storage Room, Ensuite Bathroom, Basement. Furniture : Fully Furnished. Kitchen : Fully Fitted. Garden : Private, Landscaped, Easy Maintenance. Parking : Open. Category : Investment, Resale.



Features:

Features

Private Terrace
Storage Room
Ensuite Bathroom
Basement

Furniture

Fully Furnished

Orientation

South

Setting

Mountain Pueblo

Kitchen

Fully Fitted

Garden

Private
Landscaped
Easy Maintenance

Parking

Open

Category

Investment
Resale